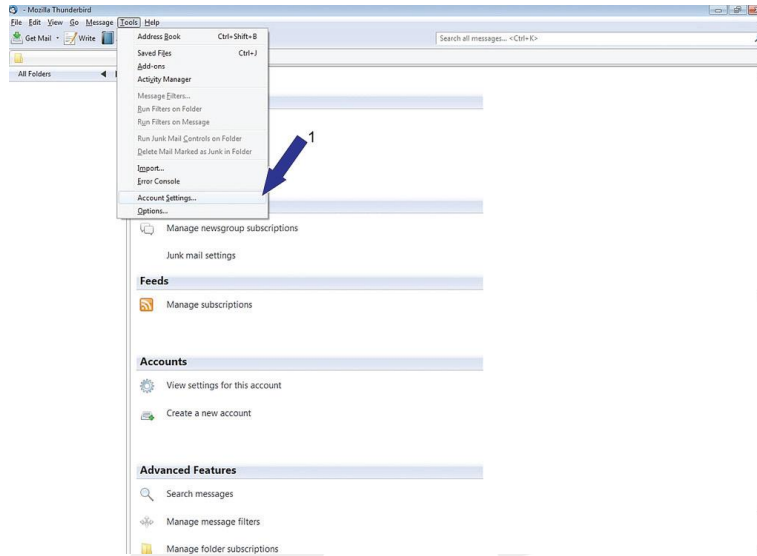
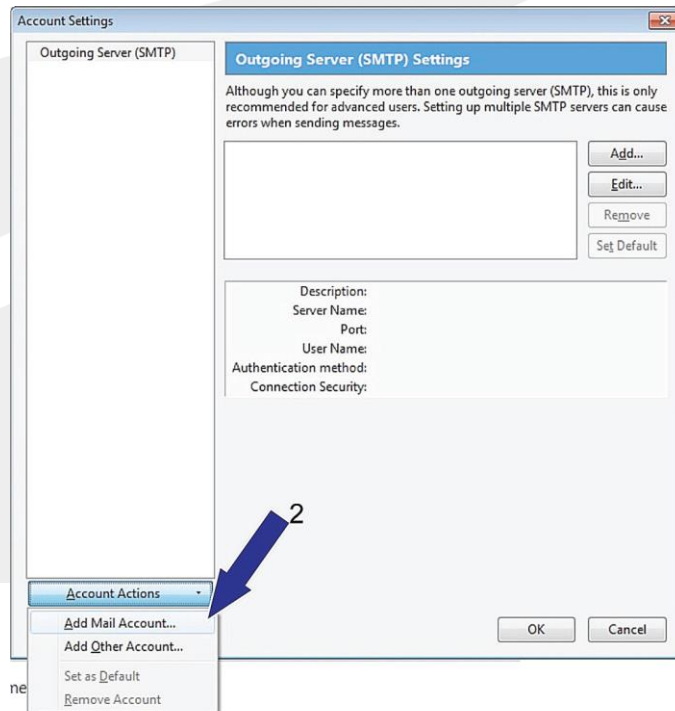


Setting up an IMAP mail account in Thunderbird for Windows

1. On the top select Tools then click Account Settings



2. In the bottom left corner, click Account Actions and select Add Mail Account



3. Fill in your name and enter your email address and password you received; click Continue

The image shows a 'Mail Account Setup' dialog box. It contains three input fields: 'Your name' with the text 'Your Name', 'Email address' with 'example@domain.co.za', and 'Password' with a masked password '••••••'. There is a checked checkbox for 'Remember password'. At the bottom right are 'Cancel' and 'Continue' buttons. Four blue arrows with numbers point to these elements: arrow 3 points to the name field, arrow 4 points to the email field, arrow 5 points to the password field, and arrow 6 points to the 'Continue' button.

4. It will attempt to automatically pick up your settings, so you need to alter these settings; your full email address is the Username; set the Incoming server as was provided and change the type from POP to IMAP, with port 143

The image shows the 'Mail Account Setup' dialog box in its second stage. The top section is identical to the first. Below it is the 'Editing Config' section. It contains: 'Username' field with 'example@domain.co.za'; 'Incoming' section with a text field 'imap.yourdomain.co.za', a dropdown menu set to 'IMAP', a port field '143', and a dropdown menu set to 'None'; 'Outgoing' section with a dropdown menu set to '- As provided by ISP -', the label 'SMTP', a port field '25', and a dropdown menu set to 'None'. There are 'Manual Setup...', 'Re-test Configuration', 'Cancel', and 'Create Account' buttons. Four blue arrows with numbers point to these elements: arrow 7 points to the Username field, arrow 8 points to the Incoming dropdown menu, arrow 9 points to the Incoming port field, and arrow 10 points to the 'Re-test Configuration' button.

When you Re-test Configuration it should complete the setup. Select Close if needed to return to your home screen.