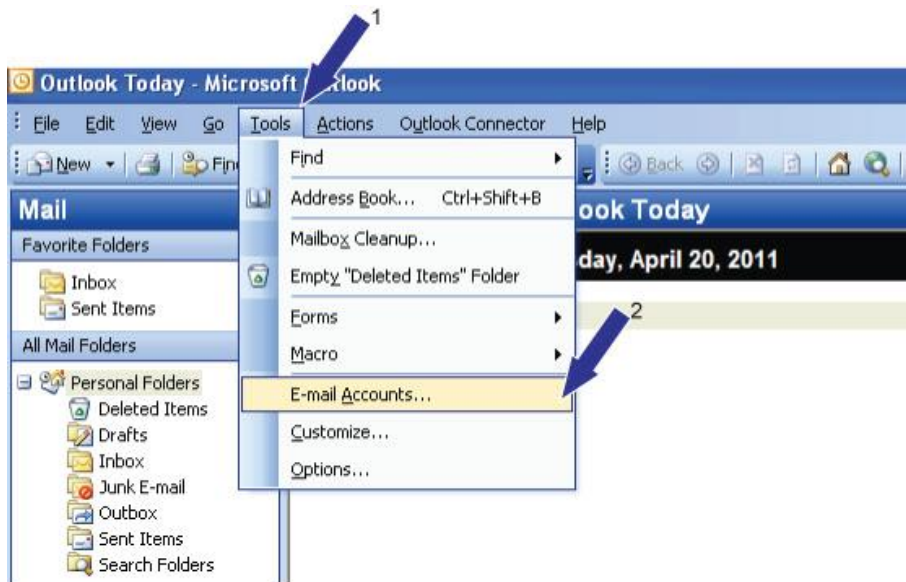
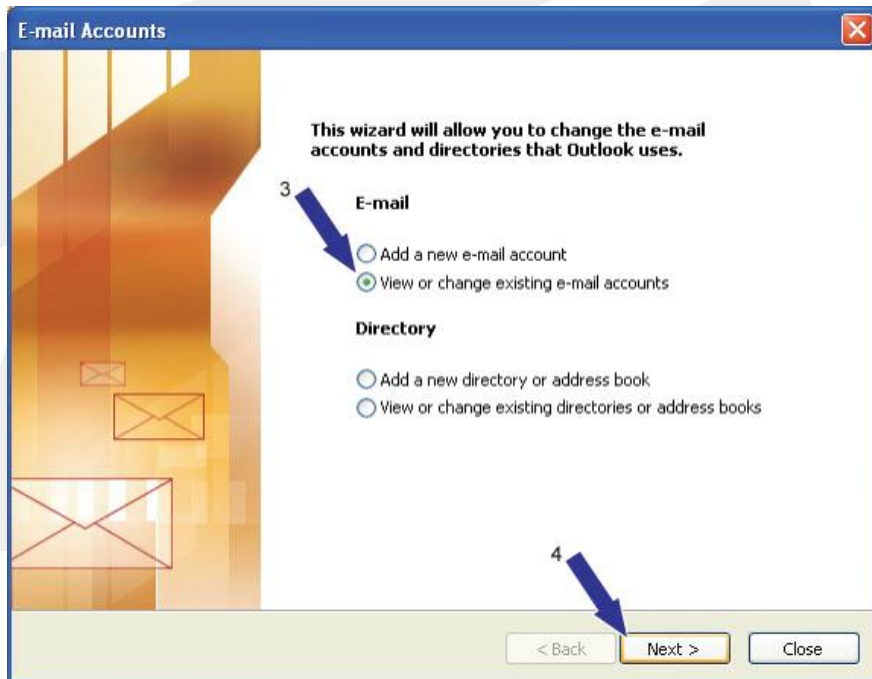


Outlook 2003 Auth SMTP Setup

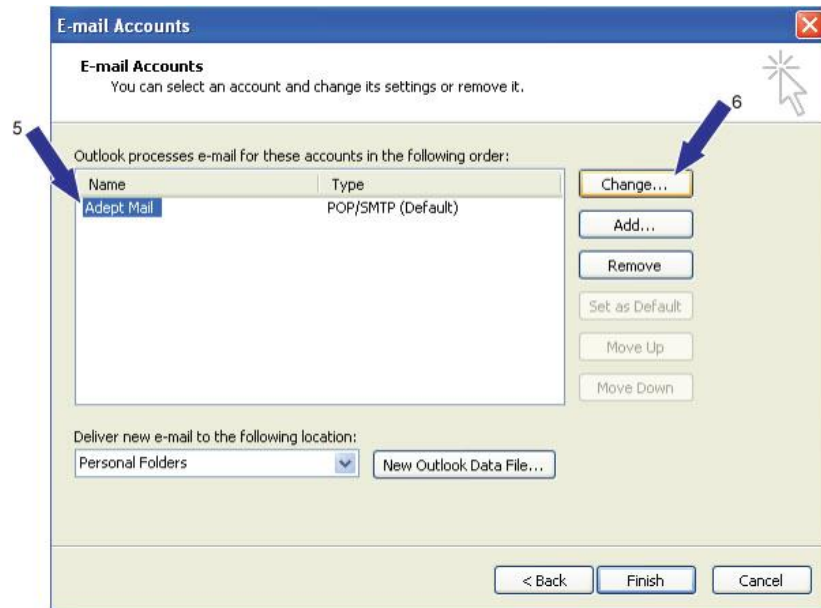
1. Click Tools, and then click Email Accounts



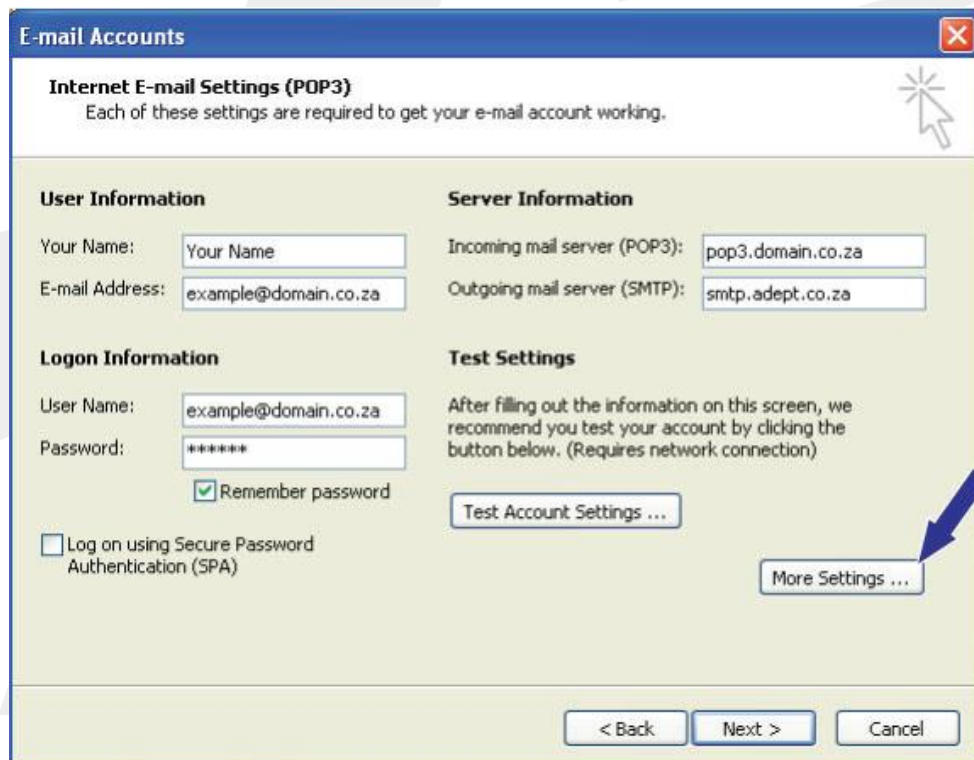
2. Click View or change existing e-mail accounts and then click Next



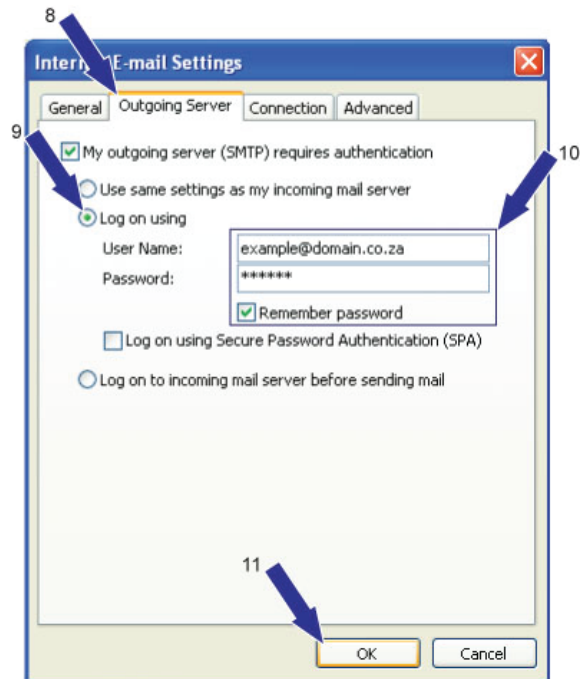
3. Select the email account and click Change



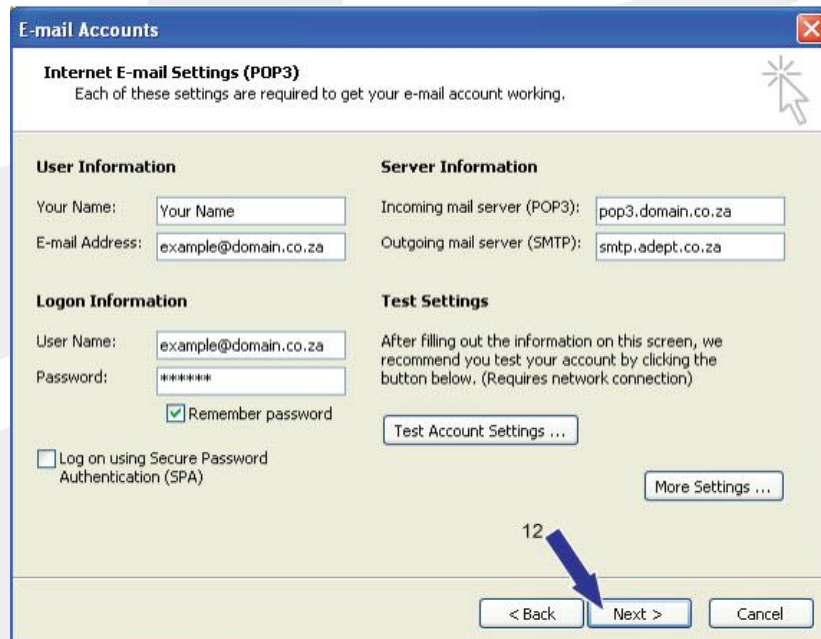
4. Click More Settings



5. Click on the Outgoing Server tab, select Log on using, and fill in the username and password details as supplied (do not tick "Log on using Secure Password Authentication (SPA)"); click Ok



6. Click Next



7. Click Finish

