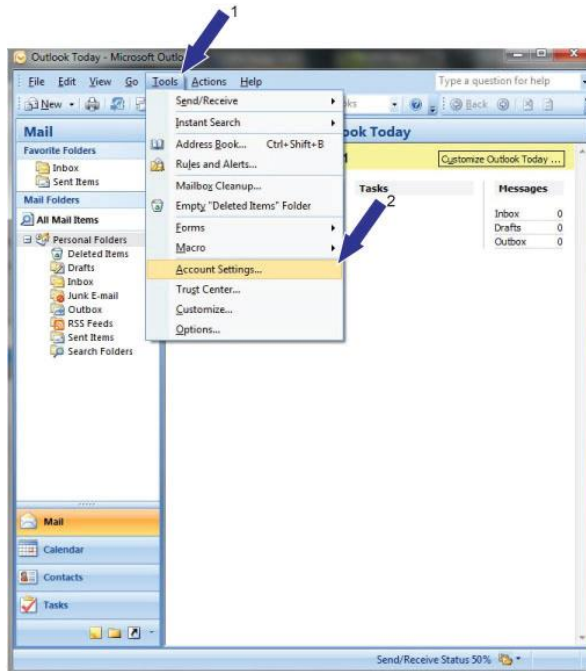
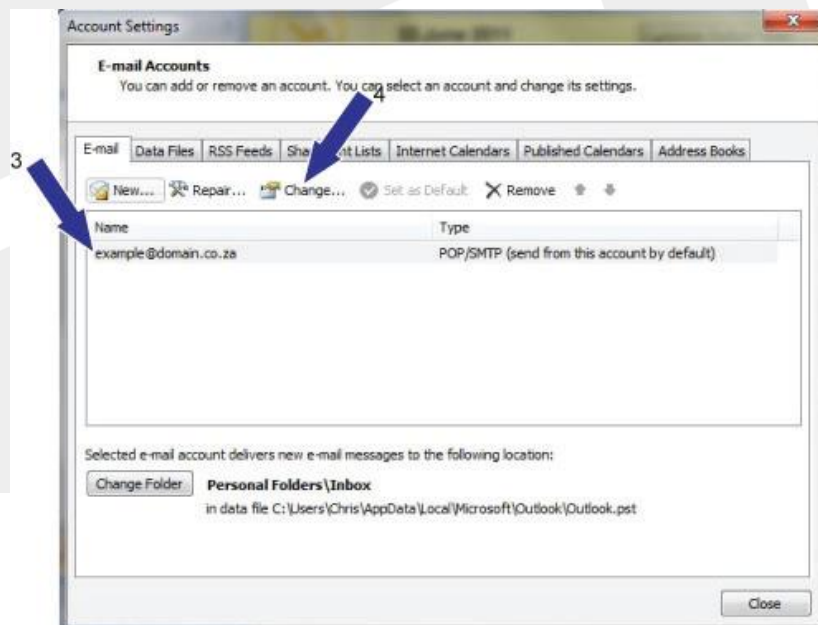


Outlook 2007 Auth SMTP Setup

1. Click Tools, and then click Account Settings



2. Select your email account and click on Change



3. Select More Settings

Add New E-mail Account

Internet E-mail Settings
Each of these settings are required to get your e-mail account working.

User Information
Your Name:
E-mail Address:

Server Information
Account Type:
Incoming mail server:
Outgoing mail server (SMTP):

Logon Information
User Name:
Password:
 Remember password
 Require logon using Secure Password Authentication (SPA)

Test Account Settings
After filling out the information on this screen, we recommend you test your account by clicking the button below. (Requires network connection)

4. Click on the Outgoing Server tab, then tick "My outgoing server (SMTP) requires authentication", enter your details as supplied and click on OK

Internet E-mail Settings

My outgoing server (SMTP) requires authentication
 Use same settings as my incoming mail server

Log on using
User Name:
Password:
 Remember password
 Require Secure Password Authentication (SPA)

Log on to incoming mail server before sending mail