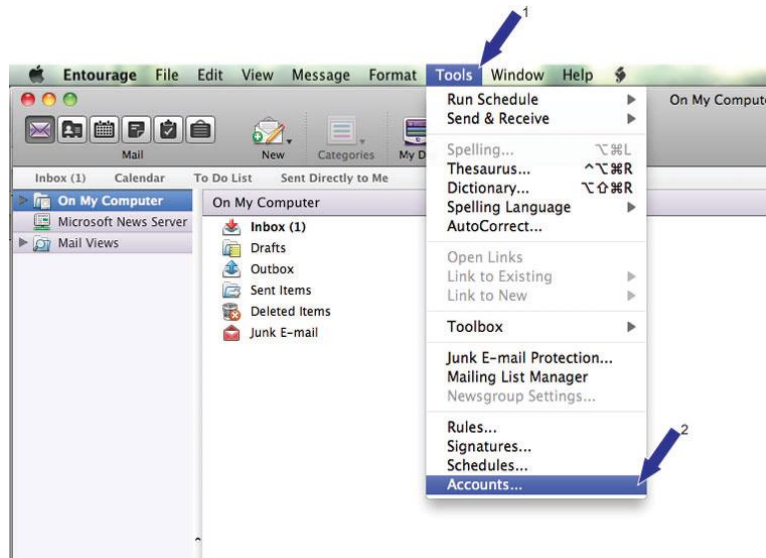
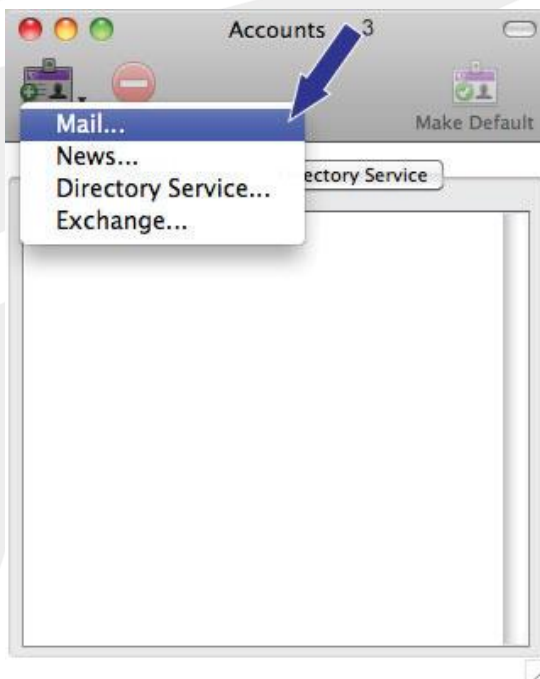


Entourage POP3 Mail Account Setup

1. Click on Tools and then Accounts



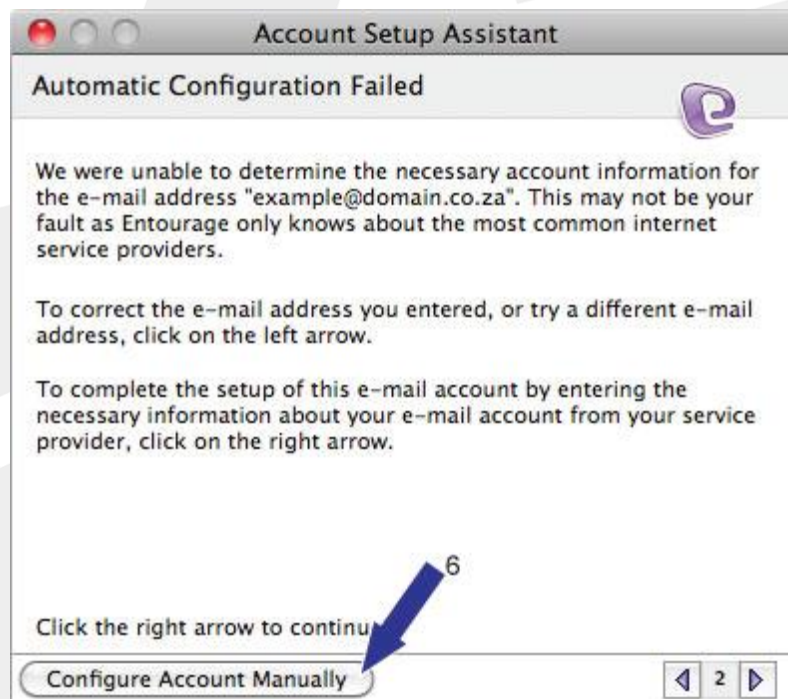
2. Select Mail



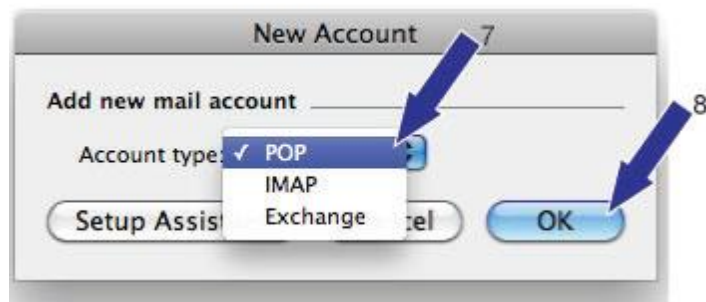
3. Enter your email address and click on the arrow to go to page 2



4. Click on Configure Account Manually



5. Select POP for the account type and click on OK



6. Make sure you are on Account Settings; enter your account name (make sure "Include this account...." is checked); enter your name, E-mail address, Account ID, POP server and password as provided; check "Save password.....", enter your SMTP server and click on OK to finish

