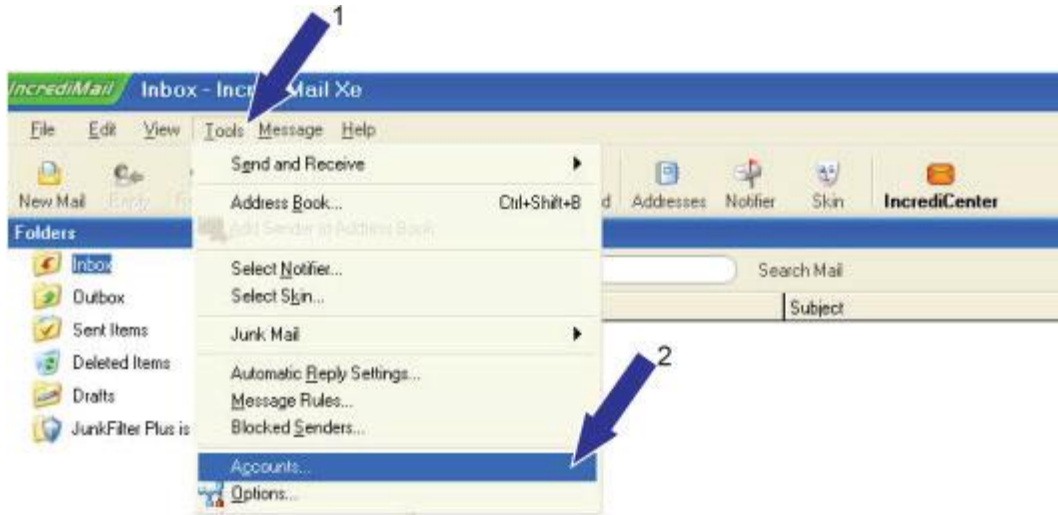
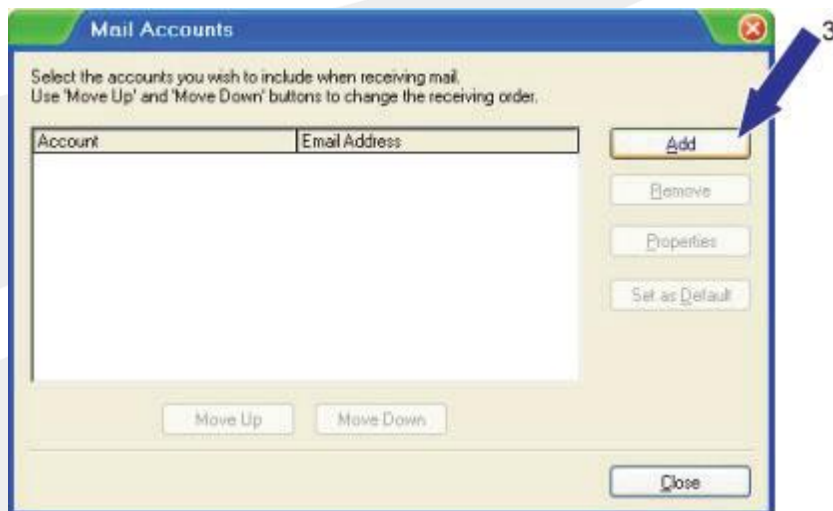


Incredimail POP3 Mail Account Setup

1. Click on Tools and then on Accounts



2. Click on Add



3. Select "Let me configure settings myself" and click on Next



4. Enter your name and email address and click on Next



5. Enter the Incoming and Outgoing Mail Server as provided and click Next

Account Wizard

Incoming and Outgoing mail servers

My incoming mail server type is: POP3

Please verify that this is your incoming (POP3) mail server.

Incoming mail server: pop3.domain.co.za

Please verify that this is your outgoing (SMTP) mail server.

Outgoing mail server: [As provided by your ISP]

Cancel < Back Next >

6. Enter your username and password as provided and click on Finish

Account Wizard

User Name and Password

Please enter the Username and Password as provided by your Internet Service Provider (ISP)

Username: example@domain.co.za

If your email address is "barbs@yourisp.com" your user name is probably barbs.

Password: [masked]

[Forgot your password? Click here](#)

Cancel < Back Finish

7. Click on OK



8. You will now see the email account that you set up; click on Close

