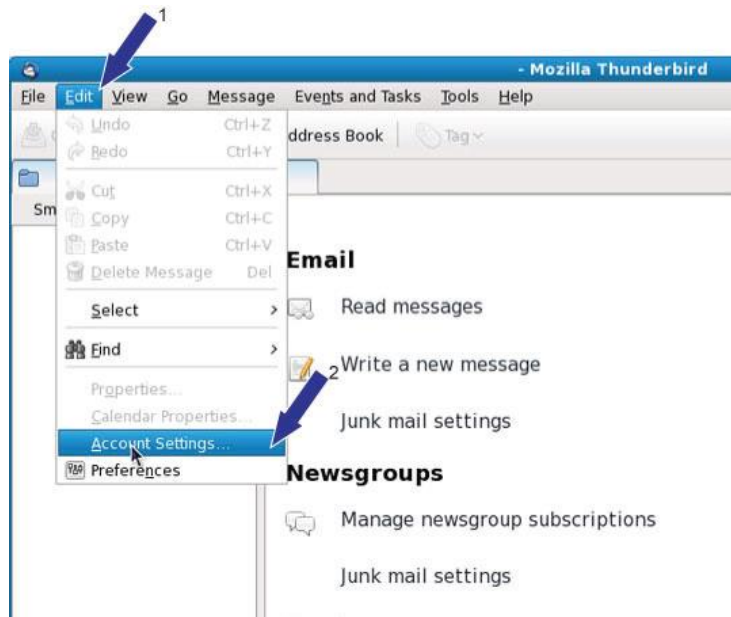
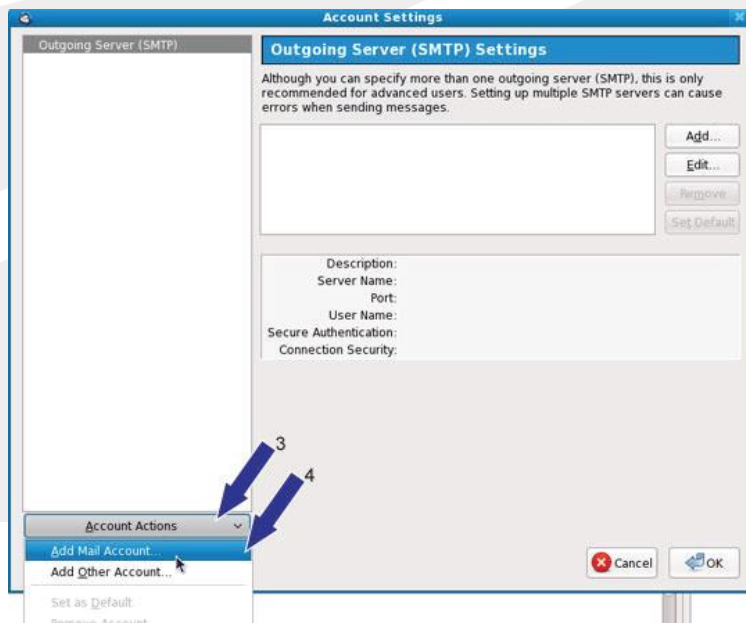


Thunderbird For Linux POP3 Mail Account Setup

1. Click on Edit and then on Account Settings



2. Click on Account Actions and then on Add Mail Account



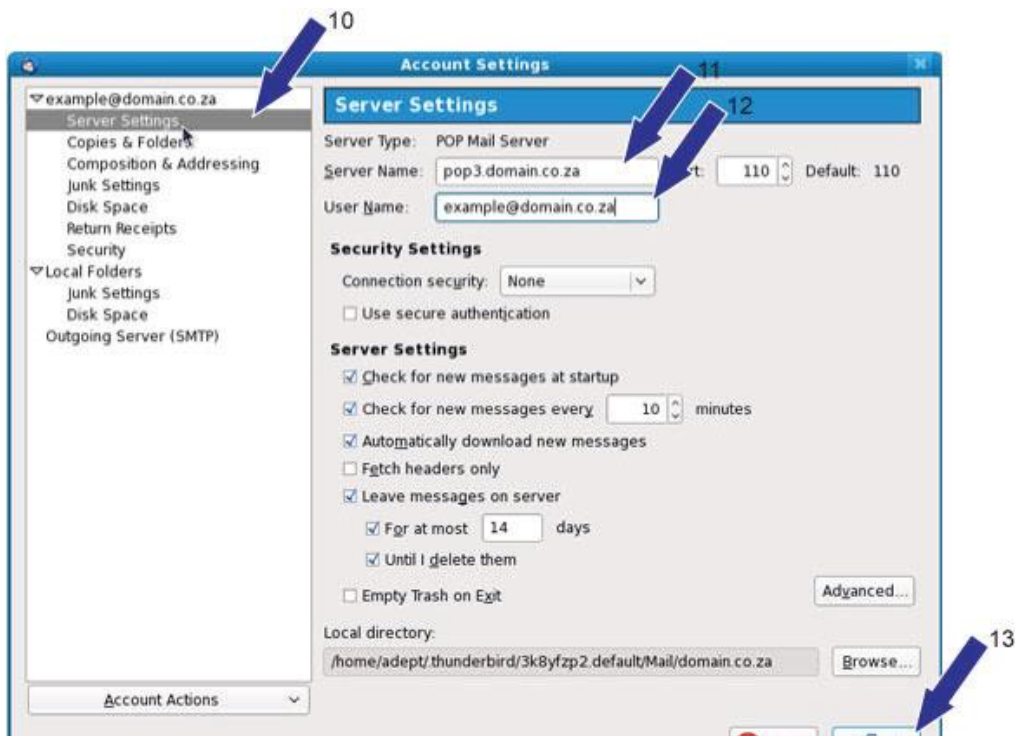
3. Enter your name, your email address and your password as provided, and click on Continue

The screenshot shows the 'Mail Account Setup' dialog box. It contains three input fields: 'Your name' with the text 'Your Name', 'Email address' with 'example@domain.co.za', and 'Password' with seven dots. A checkbox labeled 'Remember password' is checked. At the bottom right, there are 'Cancel' and 'Continue' buttons. Blue arrows with numbers 5, 6, 7, and 8 point to the 'Your name' field, 'Email address' field, 'Password' field, and the 'Continue' button, respectively.

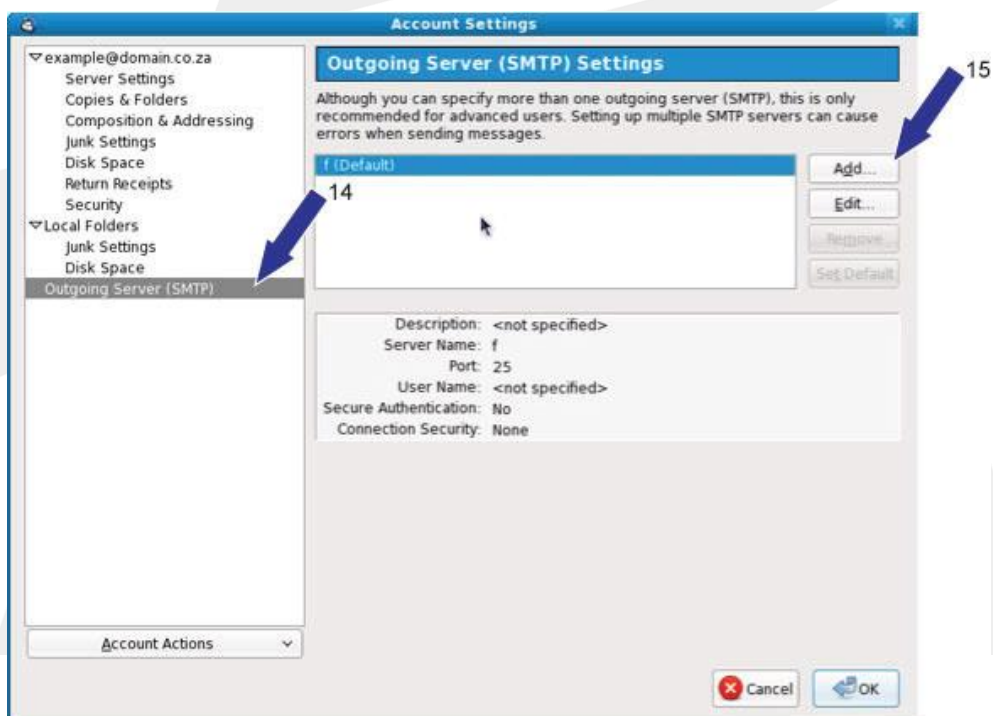
4. Click on Manual Setup

The screenshot shows the 'Mail Account Setup' dialog box after a failure. The top section is identical to the previous screenshot. Below it, a message reads: 'Thunderbird failed to find the settings for your email account.' This is followed by configuration fields: 'Username' (example), 'Incoming' (domain.co.za, POP, 110, None), and 'Outgoing' (domain.co.za, SMTP, 25, None). A 'Re-test Configuration' button is to the right of the Username field. At the bottom left, there is a 'Manual Setup...' button, and at the bottom right, there are 'Cancel' and 'Create Account' buttons. A blue arrow with the number 9 points to the 'Manual Setup...' button.

5. Click on Server Settings and enter the server name and password as provided; click on OK



6. Click on Outgoing Server and then click on Add



7. Type a description for the SMTP server and enter the server name as provided, untick the Use name and password option and click OK



8. Click on Set Default and then click OK to finish

